

PART OF THE NE, 1/4, OF SECTION 26, T.7N., R.2W., S.L.B. & M.

119

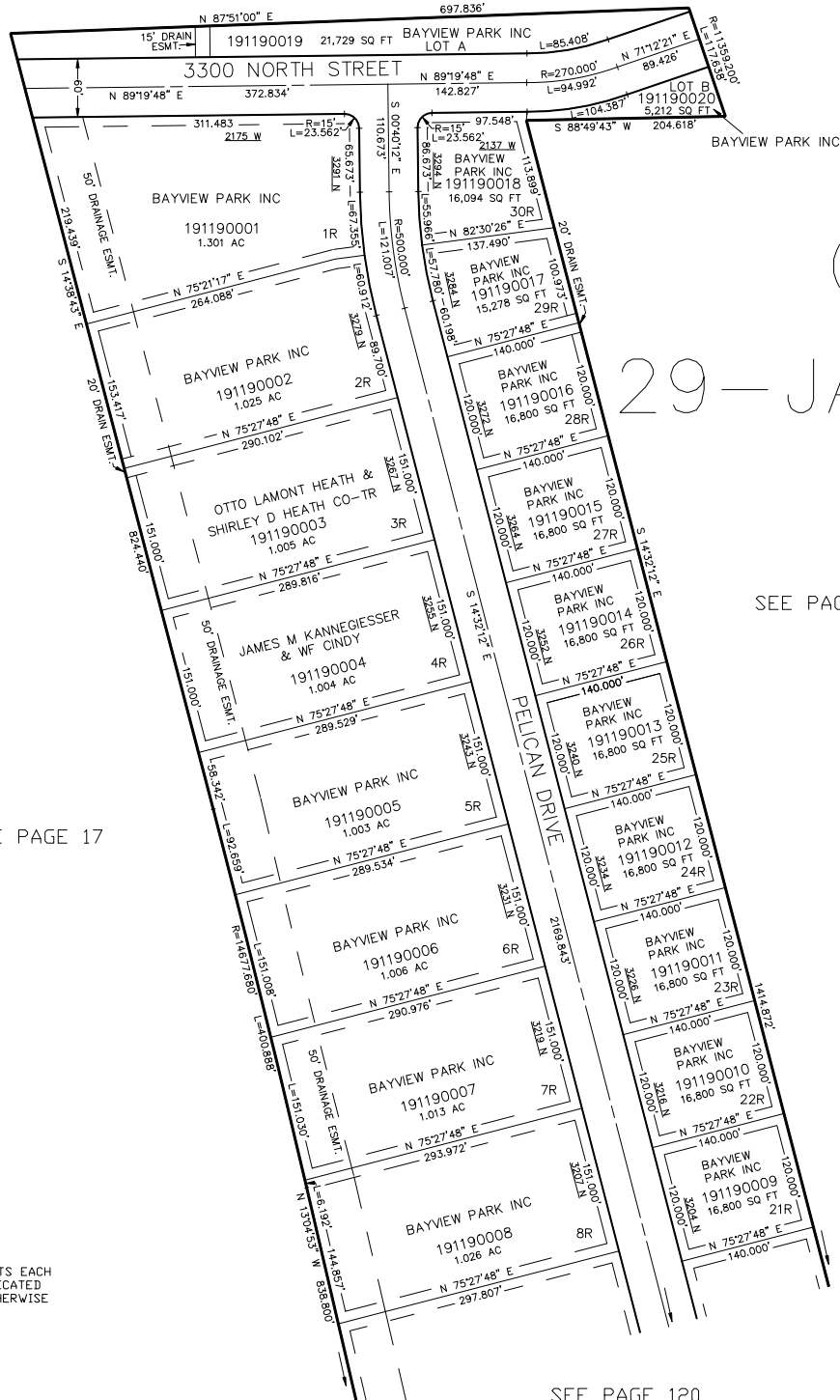
BAYVIEW PARK INC.

IN FARR WEST CITY

TAXING UNIT: 145

SCALE 1" = 100'

SEE PAGE 17



OMITTED
29-JAN-1999

SEE PAGE 17

SEE PAGE 17

FOR COMPLETE ENG DATA SEE
ORIGINAL DEDICATION PLAT IN
BOOK 46, PAGE 69 OF RECORDS.

NOTE: RESTRICTED OR "R" LOTS
ARE LIMITED TO HOMES WITHOUT
BASEMENTS WITH THE LOWEST
FINISH FLOOR ELEVATION A
MINIMUM OF 18 INCHES ABOVE
THE LOWEST TOP BACK OF THE
CURB ELEVATION ON THE LOT
FRONTAGE

10' UTILITY & DRAINAGE EASEMENTS EACH
SIDE OF PROPERTY LINES AS INDICATED
BY DASHED LINES EXCEPT AS OTHERWISE
SHOWN.

SEE PAGE 120